



2023 -2025

Arts & Wellbeing Hub Project

[Click here for our website.](#)

Email: parent@oakfield.surrey.sch.uk

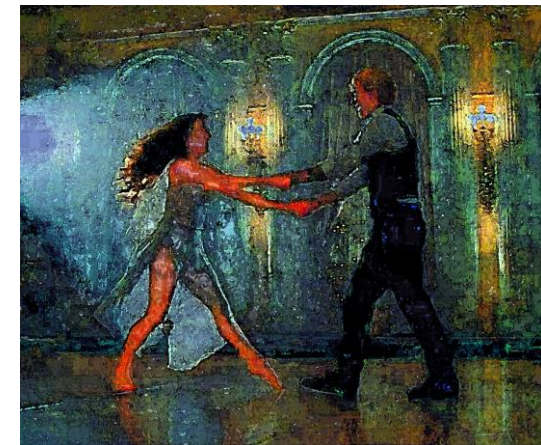
Arts & Wellbeing Hub



Our Vision An Arts & Wellbeing Hub



- ▶ Replace our playground huts (over 60 years old) with a new **Arts & Wellbeing Hub**.
- ▶ Give much-needed space for **wraparound care provision** for local families.
- ▶ Provide an exciting place for children to engage in the **Performing Arts** (music, dance and drama). This space would be available for our local schools, partners, and the wider community for various activities (camera club, judo and other martial arts, dance, etc.)
- ▶ Build on our excellent work in the **Arts** as recognised in the Arts Mark accreditation.
- ▶ Build on our excellent work supporting children with **special needs** in our specialist centre and school.
- ▶ Providing **workshops** for families in the local and wider community.
- ▶ Engage with the **local community** – providing space for schools, churches, clubs and other organisations.
- ▶ The school has achieved the School Games Mark Gold. Offer our **sports facilities** to community sports clubs.



Areas of Need



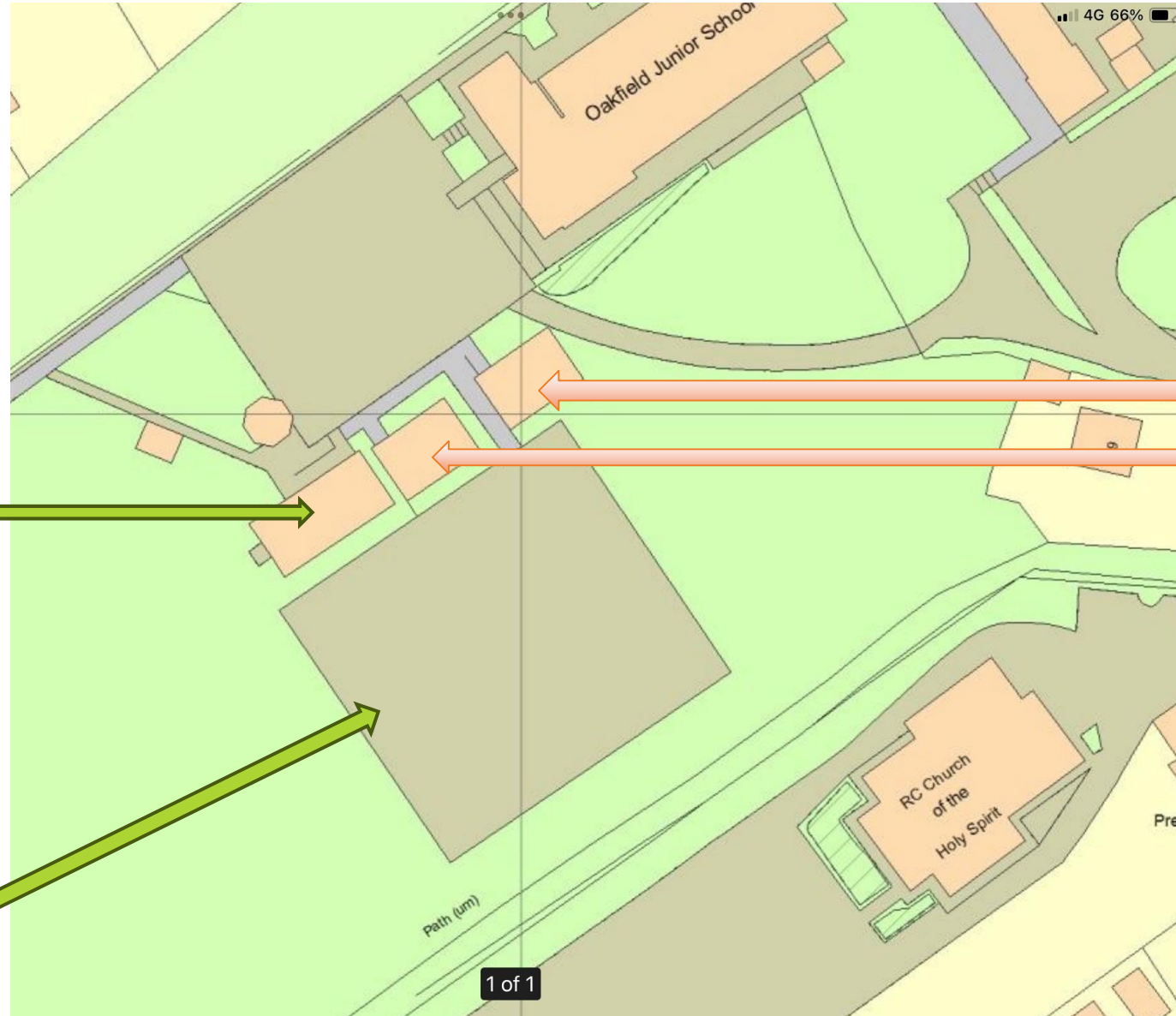
- ▶ Space for the **after-school club and wrap-around care** for both Oakfield Junior and Fetcham Village Infant School (numbers are growing and currently only 50 places are available, with more parents requesting places). *At the moment the SEND LAN centre is being used which is disruptive.*
- ▶ A **Music and Dance (Arts) space** of at least 88 sqm which can also be rented out in the evenings and at weekends for local clubs. This will have adequate storage for the school instruments and chairs for community use. At least one smaller room will be available for peripatetic music lessons.
- ▶ A **Well Being Hub** of up to 4 **smaller rooms** (which could be a flexible space) to support the work our school undertakes for children with additional needs and their families, in the local community. These rooms will be rented out in the evenings and at weekends providing a warm space with toilets for anyone using our sports facilities (MUGA - Multi Use Games Area and playing fields)

Areas of Need



- **Facilities** - to be able to offer these spaces and the sports facilities to the local community, toilets are essential as is disabled access, car parking and planning for future sustainability.
- **Traffic Management** – additional on-site parking for staff and visitors will reduce congestion on Bell Lane at peak times.
- **Improved onsite accessibility** – access for wheelchairs and disabled parking will improve access to the whole site.
- **Sports Clubs** - This flexible space will be useful for sports clubs who may want to use our other sports facilities (double tennis courts/MUGA and extensive playing fields with two 7-a-side football pitches)

Site Plan



The Creative Cabin was installed in 2017 and is used for art, design technology and cooking.

The Multi Use Games Area (MUGA) can be hired by sports clubs.

Built over 60 years ago, these old wooden huts currently used for music, afterschool care, small group learning and storage need to be replaced.

The Arts and Wellbeing Hub will replace these buildings and provide essential facilities for the school and wider community.



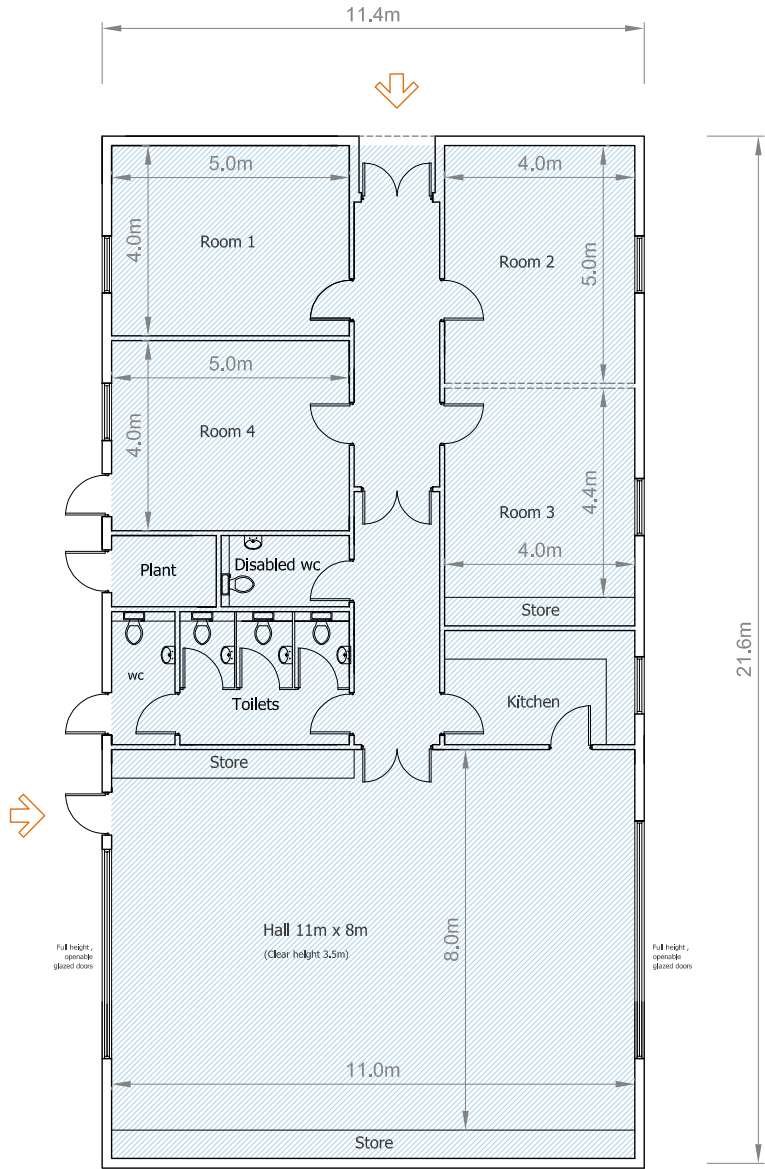
This **site layout** shows the location of a new building with an access route and new parking spaces for community use. Disabled parking and access will be included.

**Arts & Wellbeing Hub
Oakfield School,
Fetcham**

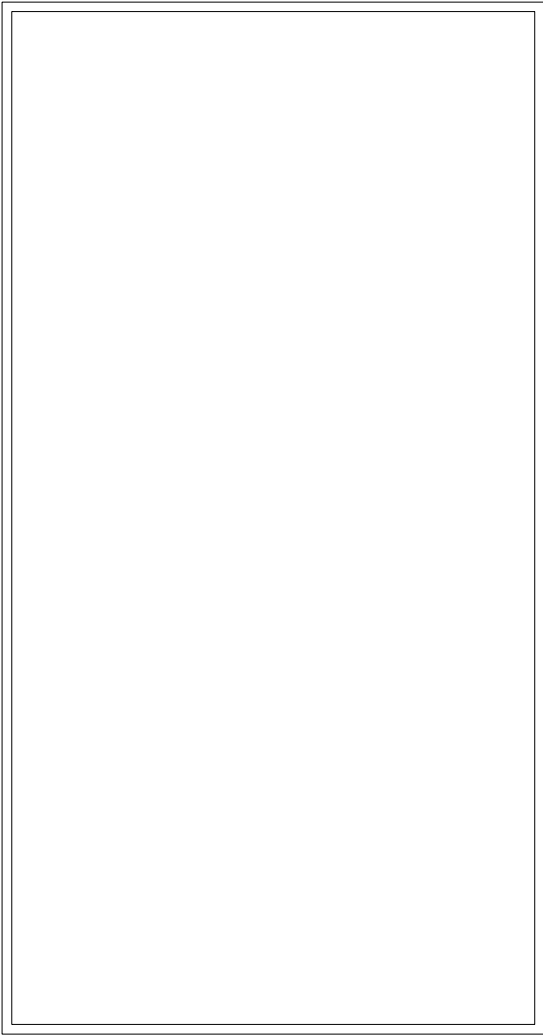
**PROPOSED GROUND FLOOR
AND ROOF PLAN**

Scale 1:100 at A3

Drawing No. DSF / P23 / 02



Ground Floor



Roof Plan

The proposed new building will provide wrap-around care and will have a small hall for the Arts (music, dance, drama) as well as 4 meeting rooms for individual music lessons, SEN interventions and a place for local groups to meet.

This flexible space will have sliding partitions for small and larger groups.

For renting, the building can be sectioned off.



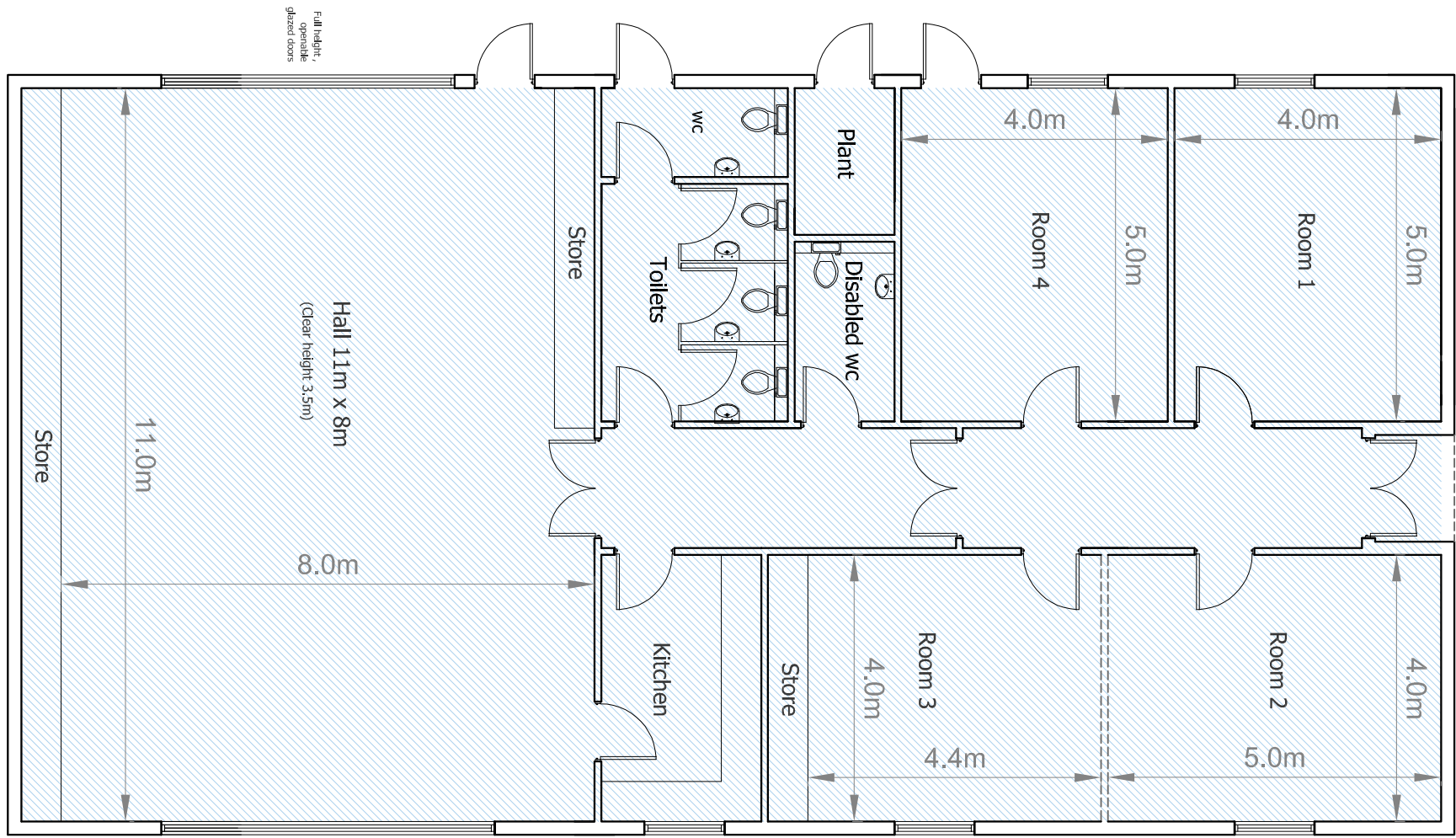
SPORTS MUGA

Orientation Plan

Entrance



Entrance



Ground Floor

Possible stage decking

21.6m

11.4m

How can you help?



- ▶ Behind the scenes, we are making good progress in networking in the local area and in researching possible income streams and grants. As you can see plans have already been drawn up.
- ▶ We have been successful already. Money raised so far £100,000 from CIL and £50,000 raised by the school.
- ▶ We now need your support to spread the word so that we can demonstrate that this is a proposal supported by the whole community.
- ▶ Anyone with relevant skills or experience in securing funding and/or in construction please contact us at **parent@oakfield.surrey.sch.uk**
- ▶ We welcome your feedback and support in this informal phase. A formal consultation will take place when we have more details.
- ▶ We aim to complete this ambitious and exciting project by Autumn 2025.